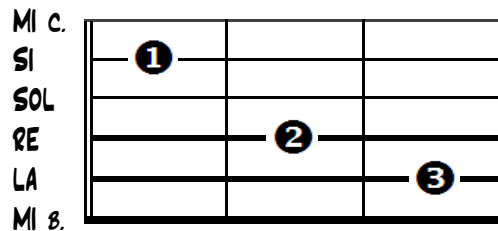
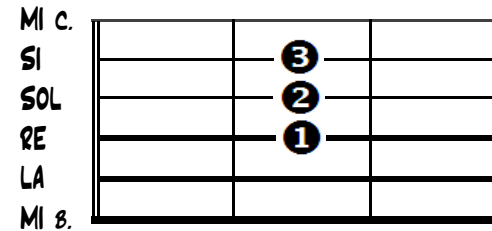


# LE 5 FORME BASE DEGLI ACCORDI MAGGIORI ("CAGED")

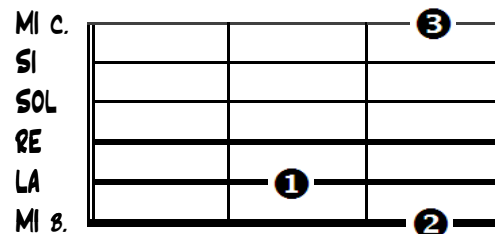
FORMA DI DO ("C SHAPE")



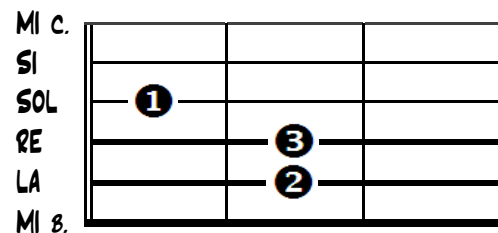
FORMA DI LA ("A SHAPE")



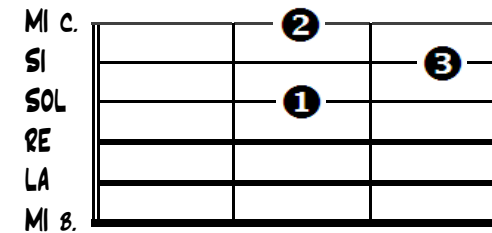
FORMA DI SOL ("G SHAPE")



FORMA DI MI ("E SHAPE")



FORMA DI RE ("D SHAPE")



A	=	LA
B	=	SI
C	=	DO
D	=	RE
E	=	MI
F	=	FA
G	=	SOL